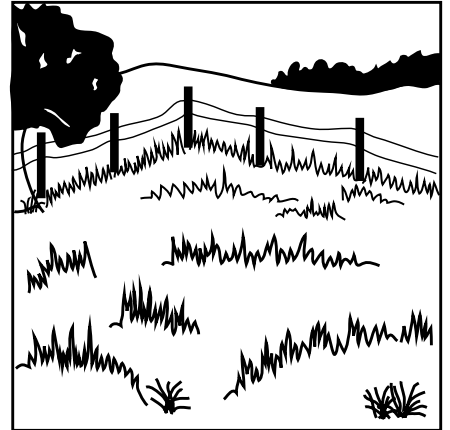
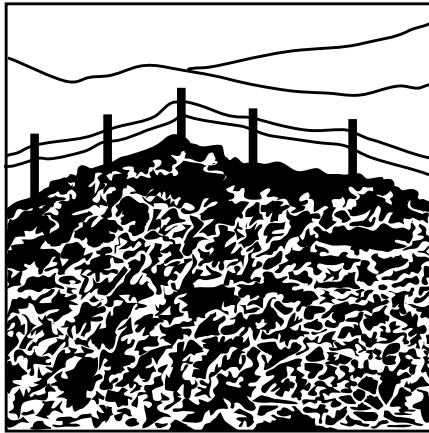
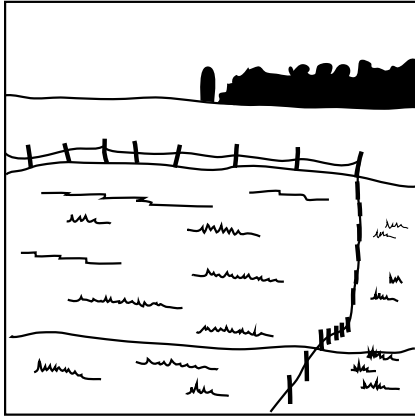


Episode 20

Todd Coffelt and Triple C Farms

Jackie talked to Todd Coffelt about raising cows in southern Iowa. The cows move to different paddocks to keep the pastures healthy. A paddock is a fenced in area of the pasture.

Circle the paddock that the cows should move to next.



Why did you choose this paddock for the cows to graze in?
